

## Non Slam Disc Check Valve

FlowBiz Brand disc check valve (wafer type) serves chemical, Food processing, Pulp and Paper, Pharmaceuticals, Textiles, Power generation, Refrigeration, Air Conditioning, Cooling Systems & many more. The valves are used in Oil lines, Hot and cold water systems, Processing line, steam, condensates, Gas lines & other media.

**Size Range :** 1/2 inch to 4 inch (15mm to 50mm) Screwed End

**Size Range :** 1/2 inch to 12 inch (15mm to 300mm) Wafer Type

### Mechanism :

Disc Check Valves opens by the fluid's line pressure and closes through compression spring when the flow stops; hence, it prevents flow back.

### Standard

- Designed and Manufactured as per BS 7438
- Testing Standard : As per API 598

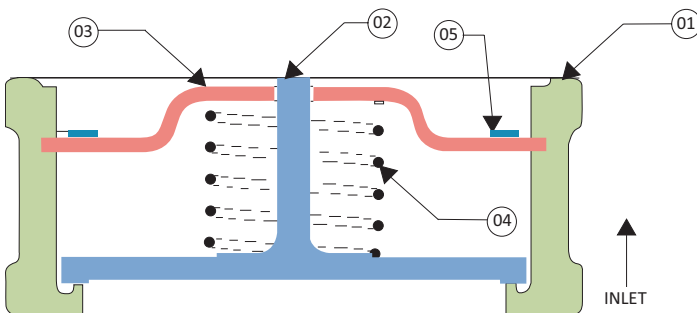
### Silent Features

- An advanced & compact design allows full flow with the least space requirement than other types of NRV.
- Easy installation between two pipes or flanges.
- Spring-loaded disc to prevent flow back in pipelines
- More robust, smaller & lighter than general NRV
- Reasonable & Economical to install and maintain
- Selection of various flange types
- Can be installed in any direction/plane or pipelines
- Size ranges from 15 mm to 300 mm.
- Self-centring design requires low operating pressure.
- Soft seat makes it a Zero leakage valve.
- Testing standard: As per API 598

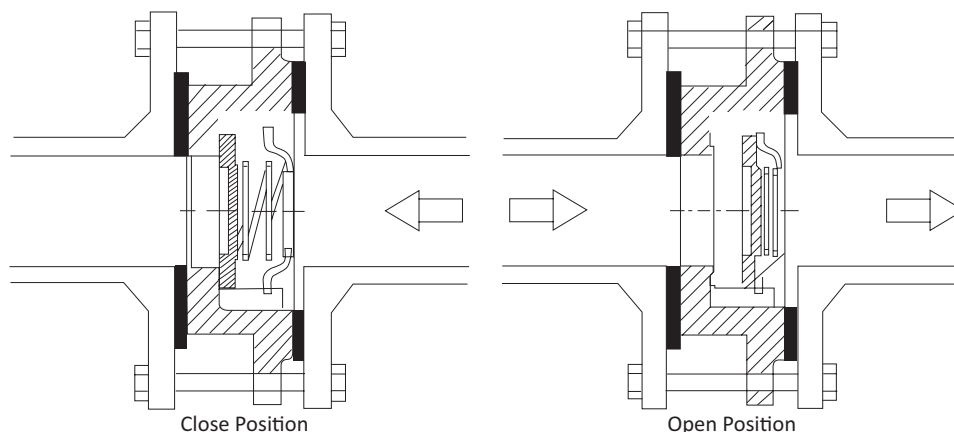


### Technical Specifications

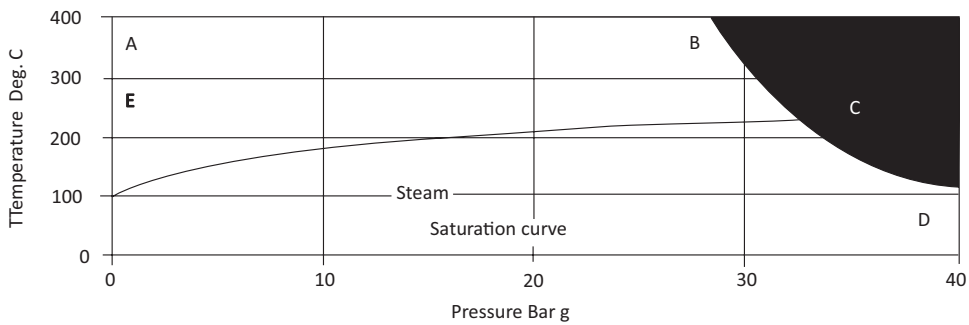
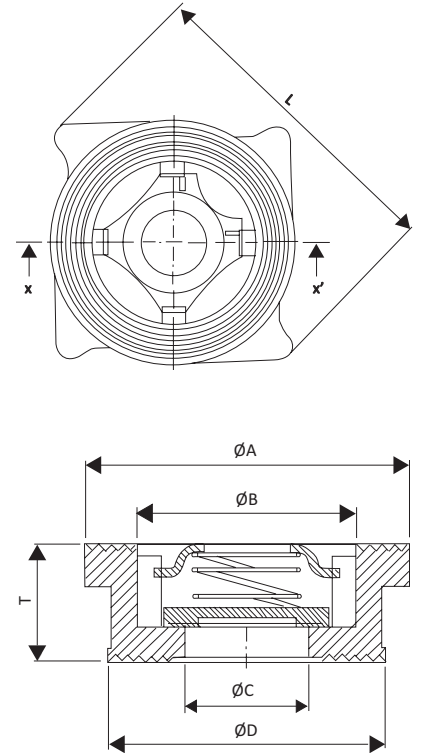
Pressure	Maximum Operating Pressure 20 Bar
Temperature	Maximum Operating Temperature 300 ° C
Flange Standard	<ol style="list-style-type: none"> <li>1. BS 10 Table D, E &amp; H ( 65 NB &amp; 80 NB will not be fitted between 'E' Flanges )</li> <li>2. DIN: PN 6 10 16 25 40</li> <li>3. JIS 5, 10, 16, 20 ( 40 NB, 50 NB, 80 NB &amp; 100 NB will not be fitted between JIS 5 Flanges )</li> </ol>



This Specifications Wafer Type DCV			
No.	Description	Material	Qty.
01	Body	WCB / CF8 / CF8M	01
02	Disc	CF8M	01
03	Retainer	CF8 / CF8M	01
04	Spring	S. S. 304/ 316	01
05	Stopper	CF8	01

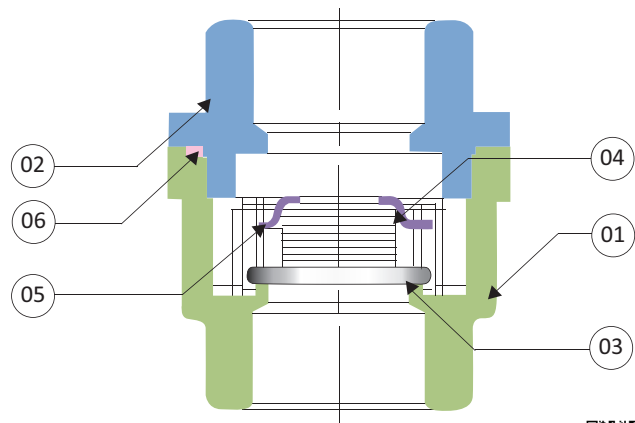


Dimensions:		(All Dimensions are in mm)								
Valve Model	Valve Size		ØA	ØB	ØC	ØD	T	L	Weight in Kgs	
	MM	Inch								
FB-DCV-15	15	½"	43	29	15	37	16	60	0.115	
FB-DCV-20	20	¾"	53	35	20	44	19	70	0.183	
FB-DCV-25	25	1"	63	44	25	55	22	80	0.284	
FB-DCV-32	32	1 ¼"	74	53	32	67	28	90	0.489	
FB-DCV-40	40	1 ½"	85	66	39	78	32	101	0.650	
FB-DCV-50	50	2"	95	77	49	92	40	115	1.088	
FB-DCV-65	65	2 ½"	115	98	64	107	46	142	1.200	
FB-DCV-80	80	3"	133	110	79	127	50	153	1.700	
FB-DCV-100	100	4"	155	129	100	142	60	184	2.550	
FB-DCV-125	125	5"	192	161	125	184	90	245	7.600	
FB-DCV-150	150	6"	223	191	150	223	105	---	9.400	
FB-DCV-200	200	8"	279	249	198	279	143	---	15.900	
FB-DCV-250	250	10"	340	306	250	338	140	---	29.100	
FB-DCV-300	300	12"	On Request							

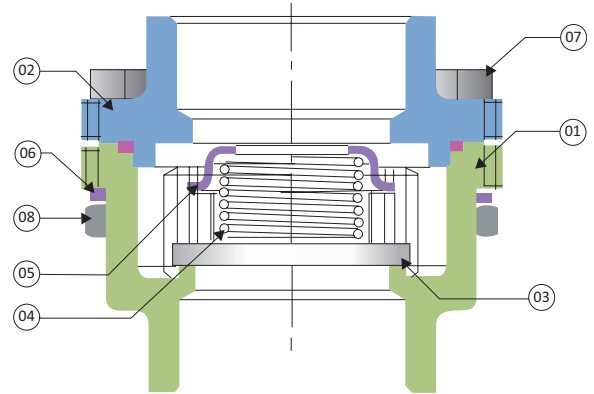


The product must not be used in the **█** region.  
 A - B - C - D = DCV without spring or with high temperature spring.  
 E - C - D = DCV with standard spring.

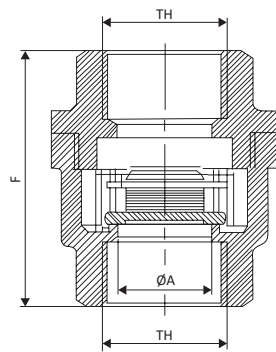
This Specifications Size 1/2" to 1" S/E			
No.	Description	Material	Qty.
01	Body	CF8 / CF8M	01
02	Connector	CF8 / CF8M	01
03	Disc	S.S. 304 / 316	01
04	Spring	Spring Steel	01
05	Retainer	S. S. 304	01
06	Body Seal	PTFE	01



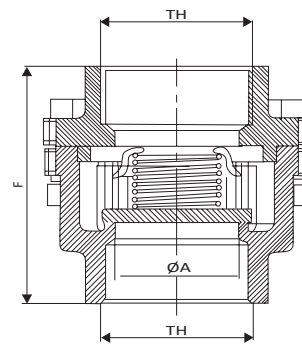
This Specifications Size 1.1/4" TO 2" Lug Type Design			
No.	Description	Material	Qty.
01	Body	CF8 / CF8M	01
02	Connector	CF8 / CF8M	01
03	Disc	S.S. 304 / 316	01
04	Spring	Spring Steel	01
05	Retainer	S. S. 304	01
06	Body Seal	PTFE	01
07	Hex Bolt	S.S. 304	04
08	Hex Nut	S.S. 304	04



Size 1/2 inch to 1 inch



Size 1 1/4 inch to 2 inch



Dimensions :							(All Dimensions are in mm)
Valve Model	Valve Size		F	TH	ØA	Weight S / E	
	MM	Inch					
FB-DCV-15-SE	15	1/2"	55	1/2"	15	0.400	
FB-DCV-20-SE	20	3/4"	60	3/4"	20	0.640	
FB-DCV-25-SE	25	1"	68	1"	25	0.955	
FB-DCV-32-SE	32	1 1/4"	76	1 1/4"	32	1.425	
FB-DCV-40-SE	40	1 1/2"	81	1 1/2"	38	1.972	
FB-DCV-50-SE	50	2"	93	2"	49	2.666	

Operating Pressure: in m bar  
Differential Pressure With Zero Flow  
With Spring

	15MM	20MM	25MM	40MM	50MM	65MM	80MM	100MM	125MM	150MM	200MM	250MM
↑	25	25	25	28	29	30	31	33	On Request			
→	22.5	22.5	22.5	24.5	24.5	25	25.5	26.5	On Request			
↓	20	20	20	20	20	20	20	20	On Request			

→ Indicates Flow direction

- The Valve can be installed, without spring in vertical pipe line with bottom to top flow, Where lowest opening pressures are required.

Without Spring

	15MM	20MM	25MM	40MM	50MM	65MM	80MM	100MM	125MM	150MM	200MM	250MM
↑	2.5	2.5	2.5	35	4	4.5	5.5	6.5	On Request			

→ Indicates Flow direction

