

SINGLE PIECE DESIGN BALL VALVES - REGULAR BORE (ASME CLASS 150 & 300) ISO-17292

FlowBiz make single-piece design Ball Valve comes with the advantage of economical cost and stalwart. The body is in a single piece & a smaller ball has to be used leading to a reduced port known as the reduced bore. Results in reduced flow through the valve, as the ball bore is one size smaller than the pipe size.

The single-piece designed ball valve has a body & end connection formed from a single piece of material. The valve trim and seals are inserted through one of the end connections. This type of valve will not have a port size equal to the line size.

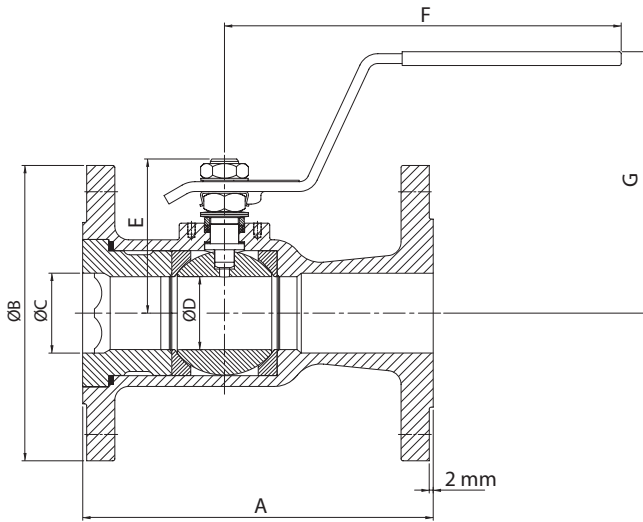


FlowBiz Single Piece Design Ball Valve Flanged End to ASA 150 Class & 300 Class Blow-Out Proof Steam, Floating Ball Reduced Port Design

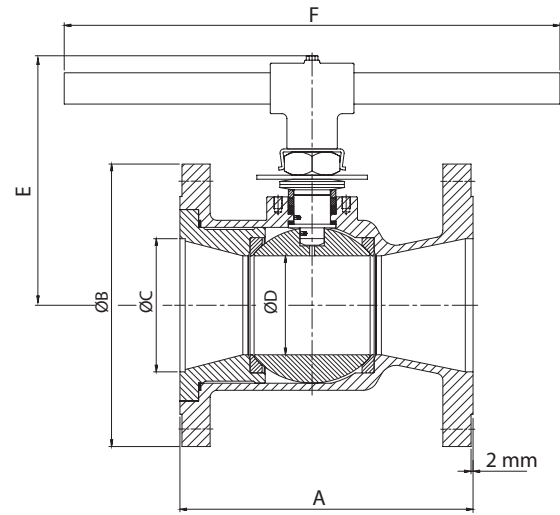
Body	Investment Casting CF8- 304 / CF8M -SS 316 / CF3- SS 304L / CF3M - SS 316L / CS to ASTM A216 Gr. WCB
Ball	AISI 304 / SS 316 / SS 304L / SS 316L
Stem	AISI 304 / SS 316 / SS 304L / SS 316L
Seat & Seal	PTFE / RPTFE / Glass Filled PTFE / Carbon Filled TEFLON
Design Standard	Generally Conforming to BS-5351 / API 602
Testing Standard	BS-6755
Operation	MS Lever With Zinc Plated / SS With PVC Sleeve / Wrench Operated / Gear Operated / Pneumatic Actuator / Electric Actuator
End Connection	ASA Flanged End to 150 Class & 300 Class
Hyd. Test Pressure 150 Class	Body : 425 psi g (30 Kg/cm ²) For ASA 150# Seat : 300 psi g (21 Kg/cm ²) For ASA 150#
Hyd. Test Pressure 300 Class	Body : 1100 psi g (77 Kg/cm ²) For 300# Seat : 800 psi g (56 Kg/cm ²) For 300#
Size Range	15 NB to 200 NB (½ inch to 8 inch)

Design Specification

Design Standard	: ISO 17292
End Connection Standard	: ASME B16.5
Face to Face Standard	: ASME B16.10
Pressure Testing	: ISO 5208 / API 598
Fire Test	: ISO 10497 / API 607



Lever operated
(DN 15 - DN 65)



Wrench operated
(DN 80 - DN 150)

Dimensions

Size		A		B		C	D	E	F	G	Wt. in kgs		ISO 5211 Base	
DN	NPS	CI 150	CI 300	CI 150	CI 300						CI 150	CI 300	CI 150	CI 300
15	½	108	140	90	95	13	11	38	120	90	1	2	F03	F03
20	¾	117	152	100	115	19	11	38	120	90	1	2.5	F03	F03
25	1	127	165	110	125	25	17	46	140	100	2	4	F03	F03
40	1½	165	190	125	155	38	27	56	180	115	4	4.5	F04	F04
50	2	178	216	150	165	51	37	75	210	122	6.5	9	F05	F05
65	2½	190	241	180	190	64	49	102	210	142	11	15	F07	F07
80	3	203	282	190	210	76	62	175	390		15.5	22	F07	F07
100	4	229	305	210	255	102	74	195	390		25	35	F07	F07
150	6	267	403	280	320	152	98	245	*		40	65	F10	F12

All dimensions in mm and weight in kg

*600mm for CI 150 & 890mm for CI 300

API 6D design valves are also available on demand

Test Pressure (bar)

	Class 150	Class 300
Shell - Hydrostatic	30	77
Seat - Hydrostatic	22	56
Seat - Pneumatic	5.5	5.5