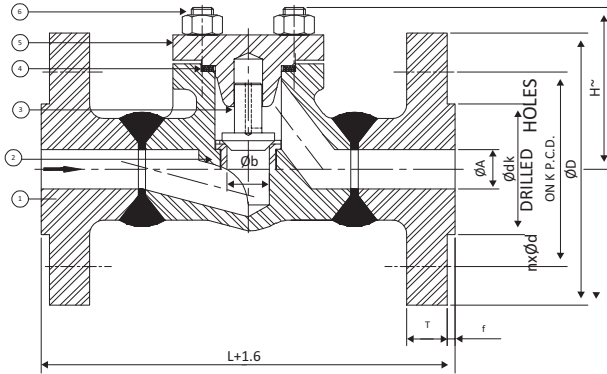


FORGED STEEL CHECK VALVE FLANGE END - ASA 150 CLASS

Standards & Specifications :

Design Standard : API 602 / BSEN ISO 15761
Type : Lift / Piston Check Valve Bolted / Weld Cover
Full Bore, Weld On Flanges



STANDARD MATERIAL COMBINATION

P.No.	Description	Carbon Steel to ASTM		Alloy Steel to ASTM				Stainless Steel to ASTM			
		A105	A350 LF2	A182 F5	A182 F11	A182 F22	A182 F9	A182 F304	A182 F316	A182 F304L	A182 F316L
1	BODY	A105	A350 LF2	A182 F5	A182 F11	A182 F22	A182 F9	A182 F304	A182 F316	A182 F304L	A182 F316L
2	SEAT RING	As per Trim Material Combination									
3	WEDGE	As per Trim Material Combination									
4	GASKET	Stainless steel + Graphoil									
5	COVER	A105	A350 LF2	A182 F5	A182 F11	A182 F22	A182 F9	A182 F304	A182 F316	A182 F304L	A182 F316L
6	STUDS	A193 B7	A320 L7	A193 B7	A193 B16	A193 B16	A193 B16	A193 B8	A193 B8	A193 B8	A193 B8

Body Material Combination with ASTM A304H, F316H, F321, F347 also provided on request

TRIM MATERIAL COMBINATION (ON REQUEST)

Trim No.	Seat Ring Face	Wedge Seat Face	Stem	Backseat Bush	Lantern Ring
1	F6a/13% Cr.	F6a/13% Cr.	F6a/AISI 410	F6a/AISI 410	F6a/AISI 410
2	F304	F304	F304/AISI 304	F304/AISI 304	F304/AISI 304
5	STELLITE	STELLITE	F6a/AISI 410	F6a/AISI 410	F6a/AISI 410
8	STELLITE	F6a/13% Cr.	F6a/AISI 410	F6a/AISI 410	F6a/AISI 410
9	MONEL	MONEL	MONEL	MONEL	MONEL
10	F316	F316	F316/AISI 316	F316/AISI 316	F316/AISI 316
12	316+STELLITE	316	F316/AISI 316	F316/AISI 316	F316/AISI 316
13	ALLOY 20	ALLOY 20	ALLOY 20	ALLOY 20	ALLOY 20

• All Dimensions in mm

DIMENSIONAL DATA CLASS-150

SIZE	L	Øb	ØA	H	D	T	Ødk	f	K=PCD	n=No of Holes	d=Hole Dia	Aprox.Wt.(Kgs)
15mm	108	9.5	9.5	60	90	8	34.9	2	60.3	4	15.8	5.2
20mm	117	12.7	17.5	78	100	8.9	42.9	2	69.9	4	15.8	9.7
25mm	127	17.5	23	90	110	9.6	50.8	2	79.4	4	15.8	11.9

NOTE: The above data is subject to change without notice due to our continuing product improvement program. (*WEIGHT GIVEN IN KGS)

TEST PRESSURES

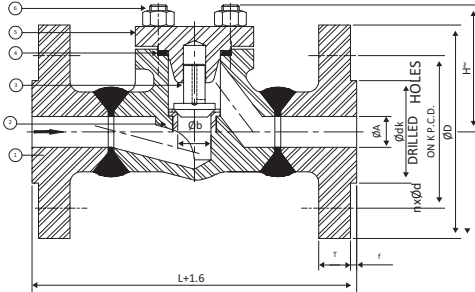
CLASS	SHELL TEST (HYDROSTATIC)		SEAT TEST			
			HYDROSTATIC		PNEUMATIC	
	150	30 Bar	435 Psi g	22 Bar	319 Psi g	6.9 bar



FORGED STEEL CHECK VALVE FLANGE END - ASA 300 CLASS

SPECIFICATIONS

Design Standard : API 602 / BSEN ISO 15761
Type : Lift / Piston Check Valve Bolted / Weld Cover
Full Bore, Weld On Flanges



STANDARD MATERIAL COMBINATION

P.No.	Description	Carbon Steel to ASTM		Alloy Steel to ASTM				Stainless Steel to ASTM			
		A105	A350 LF2	A182 F5	A182 F11	A182 F22	A182 F9	A182 F304	A182 F316	A182 F304L	A182 F316L
1	BODY	A105	A350 LF2	A182 F5	A182 F11	A182 F22	A182 F9	A182 F304	A182 F316	A182 F304L	A182 F316L
2	SEAT RING	As per Trim Material Combination									
3	WEDGE	As per Trim Material Combination									
4	GASKET	Stainless steel + Graphoil									
5	COVER	A105	A350 LF2	A182 F5	A182 F11	A182 F22	A182 F9	A182 F304	A182 F316	A182 F304L	A182 F316L
6	STUDS	A193 B7	A320 L7	A193 B7	A193 B16	A193 B16	A193 B16	A193 B8	A193 B8	A193 B8	A193 B8

Body Material Combination with ASTM A304H, F316H, F321, F347 also provided on request

TRIM MATERIAL COMBINATION (ON REQUEST)

Trim No.	Seat Ring Face	Wedge Seat Face	Stem	Backseat Bush	Lantern Ring
1	F6a/13% Cr.	F6a/13% Cr.	F6a/AISI 410	F6a/AISI 410	F6a/AISI 410
2	F304	F304	F304/AISI 304	F304/AISI 304	F304/AISI 304
5	STELLITE	STELLITE	F6a/AISI 410	F6a/AISI 410	F6a/AISI 410
8	STELLITE	F6a/13% Cr.	F6a/AISI 410	F6a/AISI 410	F6a/AISI 410
9	MONEL	MONEL	MONEL	MONEL	MONEL
10	F316	F316	F316/AISI 316	F316/AISI 316	F316/AISI 316
12	316+STELLITE	316	F316/AISI 316	F316/AISI 316	F316/AISI 316
13	ALLOY 20	ALLOY 20	ALLOY 20	ALLOY 20	ALLOY 20

• All Dimensions in mm

DIMENSIONAL DATA CLASS-300

SIZE	L	Øb	ØA	H	D	T	Ødk	f	K=PCD	n=No of Holes	d=Hole Dia	Aprox.Wt.
15mm	152	12.7	15	60	95	12.6	34.9	2	66.7	4	15.8	5.8
20mm	178	17.5	20	78	115	14.2	42.9	2	82.6	4	19.1	6.8
25mm	203	23	23	90	125	15.9	50.8	2	88.9	4	19.1	10.7
32mm	216	30	30	97	135	17.5	63.5	2	98.4	4	19.1	14.2
40mm	229	35	35	97	155	19.1	73	2	114.3	4	22.2	26
50mm	267	46	47.6	120	165	20.7	92.1	2	127	8	19.1	29.2

NOTE : The above data is subject to change without notice due to our continuing product improvement program. (*WEIGHT GIVEN IN KGS)

TEST PRESSURES

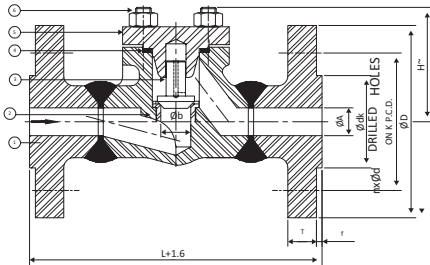
CLASS	SHELL TEST (HYDROSTATIC)		SEAT TEST			
			HYDROSTATIC		PNEUMATIC	
	300	77 Bar	1102 Psi g	57 Bar	780 Psi g	6.9 bar



FORGED STEEL CHECK VALVE FLANGE END - ASA 600 CLASS

Standards & Specifications :

Design Standard : API 602 / BSEN ISO 15761
Type : Lift / Piston Check Valve Bolted / Weld Cover
Full Bore, Weld On Flanges



STANDARD MATERIAL COMBINATION											
P.No.	Description	Carbon Steel to ASTM		Alloy Steel to ASTM				Stainless Steel to ASTM			
1	BODY	A105	A350 LF2	A182 F5	A182 F11	A182 F22	A182 F9	A182 F304	A182 F316	A182 F304L	A182 F316L
2	SEAT RING	As per Trim Material Combination									
3	WEDGE	As per Trim Material Combination									
4	GASKET	Stainless steel + Graphoil									
5	COVER	A105	A350 LF2	A182 F5	A182 F11	A182 F22	A182 F9	A182 F304	A182 F316	A182 F304L	A182 F316L
6	STUDS	A193 B7	A320 L7	A193 B7	A193 B16	A193 B16	A193 B16	A193 B8	A193 B8	A193 B8	A193 B8

Body Material Combination with ASTM A304H, F316H, F321, F347 also provided on request

TRIM MATERIAL COMBINATION (ON REQUEST)					
Trim No.	Seat Ring Face	Wedge Seat Face	Stem	Backseat Bush	Lantern Ring
1	F6a/13% Cr.	F6a/13% Cr.	F6a/AISI 410	F6a/AISI 410	F6a/AISI 410
2	F304	F304	F304/AISI 304	F304/AISI 304	F304/AISI 304
5	STELLITE	STELLITE	F6a/AISI 410	F6a/AISI 410	F6a/AISI 410
8	STELLITE	F6a/13% Cr.	F6a/AISI 410	F6a/AISI 410	F6a/AISI 410
9	MONEL	MONEL	MONEL	MONEL	MONEL
10	F316	F316	F316/AISI 316	F316/AISI 316	F316/AISI 316
12	316+STELLITE	316	F316/AISI 316	F316/AISI 316	F316/AISI 316
13	ALLOY 20	ALLOY 20	ALLOY 20	ALLOY 20	ALLOY 20

• All Dimensions in mm

DIMENSIONAL DATA CLASS-600												
MAIN DIMENSIONS					FLANGE DETAILS							Aprox.Wt. (Kgs)
					FLANGE		RAISED		FACE	BOLT	HOLES	
SIZE	øA	L	H ~	øb	øD	T	ødk	f	K	n	ød	
15mm	15	165	60	12.7	95	14.3	34.9	7	66.7	4	15.7	6.4
20mm	20	190	78	18	115	15.9	42.9	7	82.6	4	19.1	11.8
25mm	26	216	90	23	125	17.5	50.8	7	88.9	4	19.1	15.6
32mm	32	229	97	30	135	20.7	63.5	7	98.4	4	19.1	26.6
40mm	32	241	97	30	155	22.5	73.0	7	114.3	4	22.3	
50mm	46.5	292	120	36	165	25.4	92.1	7	127	8	19.1	

NOTE : The above data is subject to change without notice due to our continuing product improvement program. (WEIGHT GIVEN IN KGS)

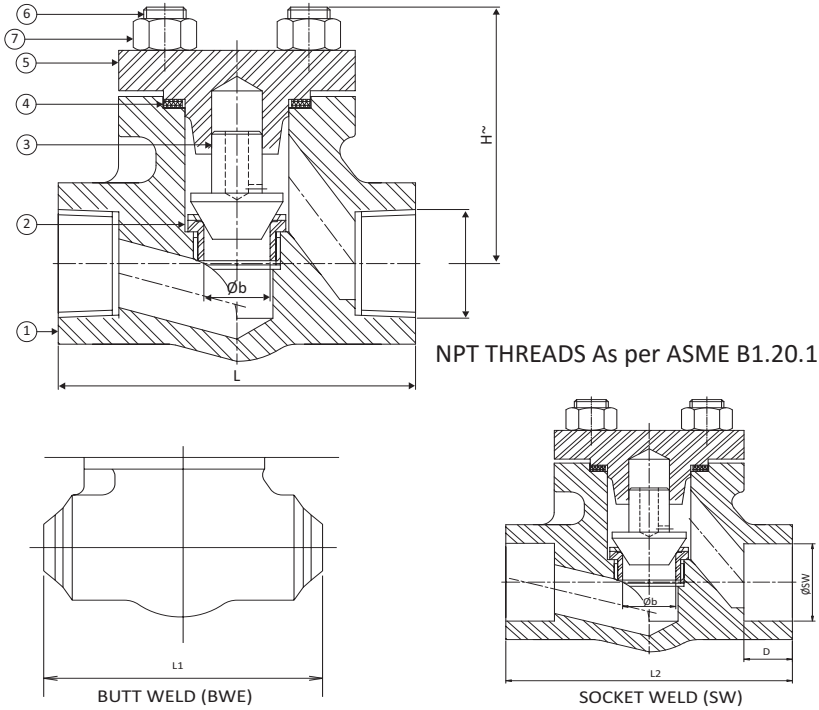
TEST PRESSURES						
CLASS	SHELL TEST (HYDROSTATIC)		SEAT TEST			
			HYDROSTATIC		PNEUMATIC	
600	154 Bar	2175 Psi g	113 Bar	1595 Psi g	6.9 bar	100 Psi g



FORGED STEEL CHECK VALVE SCREWED END, SOCKET & BUTT WELD END - ASA 800 CLASS

SPECIFICATIONS

Design Standard : API 602 / BSEN ISO 15761
Type : Lift / Piston Check Valve Bolted / Weld Cover



STANDARD MATERIAL COMBINATION

P.No.	Description	Carbon Steel to ASTM		Alloy Steel to ASTM				Stainless Steel to ASTM			
		A105	A350 LF2	A182 F5	A182 F11	A182 F22	A182 F9	A182 F304	A182 F316	A182 F304L	A182 F316L
1	BODY	A105	A350 LF2	A182 F5	A182 F11	A182 F22	A182 F9	A182 F304	A182 F316	A182 F304L	A182 F316L
2	SEAT RING	As per Trim Material Combination									
3	WEDGE	As per Trim Material Combination									
4	GASKET	Stainless steel + Graphoil									
5	COVER	A105	A350 LF2	A182 F5	A182 F11	A182 F22	A182 F9	A182 F304	A182 F316	A182 F304L	A182 F316L
6	STUDS	A193 B7	A320 L7	A193 B7	A193 B16	A193 B16	A193 B16	A193 B8	A193 B8	A193 B8	A193 B8
7	NUTS	A194 2H	A194 Gr.4	A194 2H	A194 Gr.4	A194 Gr.4	A194 Gr.8	A194 Gr.8	A194 Gr.8	A194 Gr.8	A194 Gr.8

Body Material Combination with ASTM A304H, F316H, F321, F347 also provided on request

TRIM MATERIAL COMBINATION (ON REQUEST)

Trim No.	Seat Ring Face	Wedge Seat Face	Stem	Backseat Bush	Lantern Ring
1	F6a/13% Cr.	F6a/13% Cr.	F6a/AISI 410	F6a/AISI 410	F6a/AISI 410
2	F304	F304	F304/AISI 304	F304/AISI 304	F304/AISI 304
5	STELLITE	STELLITE	F6a/AISI 410	F6a/AISI 410	F6a/AISI 410
8	STELLITE	F6a/13% Cr.	F6a/AISI 410	F6a/AISI 410	F6a/AISI 410
9	MONEL	MONEL	MONEL	MONEL	MONEL
10	F316	F316	F316/AISI 316	F316/AISI 316	F316/AISI 316
12	316+STELLITE	316	F316/AISI 316	F316/AISI 316	F316/AISI 316
13	ALLOY 20	ALLOY 20	ALLOY 20	ALLOY 20	ALLOY 20

NOTE : Other Trim Combination can be provided as Trim Material Combination On Request



• All Dimensions in mm

DIMENSIONAL DATA CLASS -800 (FULL BORE)									
DN	NPS	øb	L1(BWE)	L2(SWE)	H	ø SWE		D	Aprox. Wt. (Kgs)
						BS 3799	ASME B16.11		
15	1/2	12.7	88	88	60	+0.3 21.8 -0.0	22.2 21.8	14	1.450
20	3/4	18	100	100	78	+0.3 27.4 -0.0	27.6 27.2	14	2.2
25	1	23	124	124	90	+0.3 34.1 -0.0	34.3 33.9	14	5.4
40	1 1/2	35	170	170	120	+0.3 49 -0.0	49.2 48.8	17	7

Note : The above data is subject to change without notice due to our continuing product improvement program. (WEIGHT GIVEN IN KGS)

• All Dimensions in mm

DIMENSIONAL DATA CLASS - 800 (REDUCED BORE)									
DN	NPS	øb	L1(BWE)	L2(SWE)	H	ø SWE		D	Aprox. Wt. (Kgs)
						BS 3799	ASME B16.11		
15	1/2	10	80	80	55	+0.3 21.8 -0.0	22.2 21.8	11	1.15
20	3/4	12.7	88	88	60	+0.3 27.4 -0.0	27.6 27.2	14	1.450
25	1	18	100	100	78	+0.3 34.1 -0.0	34.3 33.9	14	2.2
40	1 1/2	30	145	145	97	+0.3 49 -0.0	49.2 48.8	14	5.4
50	2	35	170	170	120	+0.3 61 -0.0	61.7 61.2	17	7

NOTE : The above data is subject to change without notice due to our continuing product improvement program. (WEIGHT GIVEN IN KGS)

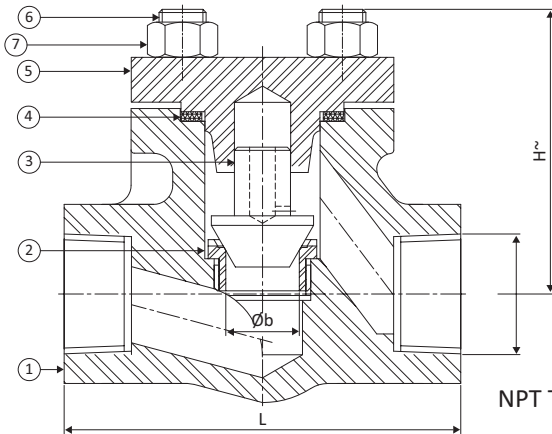
DIMENSIONAL DATA CLASS - 800 (FULL BORE)						
TEST PRESSURES						
CLASS	SHELL TEST (HYDROSTATIC)		SEAT TEST			
			HYDROSTATIC		PNEUMATIC	
800	207 Bar	3003 Psi g	152 Bar	2205 Psi g	N.A.	N.A.



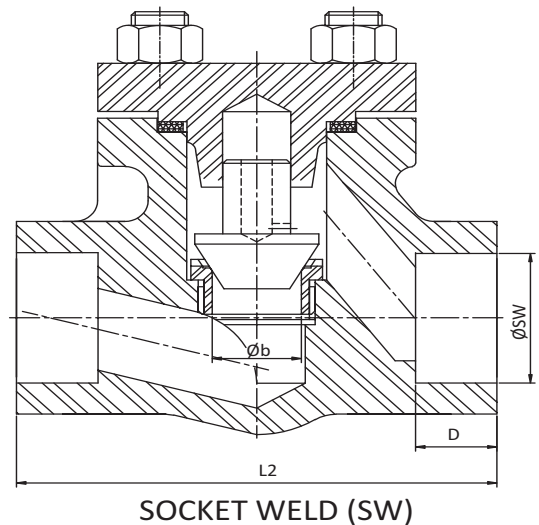
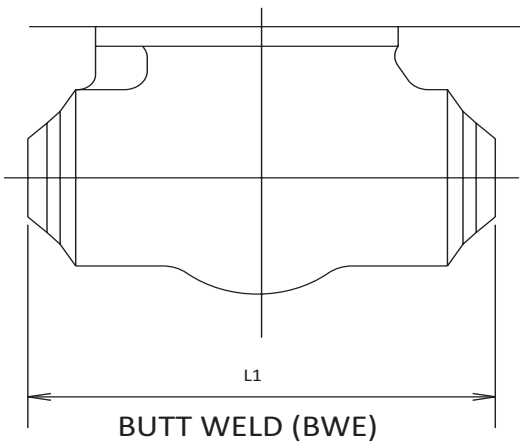
FORGED STEEL CHECK VALVE SCREWED END, SOCKET & BUTT WELD END - ASA 1500 CLASS

SPECIFICATIONS

Design Standard : API 602 / BSEN ISO 15761
Type : Lift / Piston Check Valve Bolted / Weld Cover



NPT THREADS As per ASME B1.20.1



STANDARD MATERIAL COMBINATION

P.No.	Description	Carbon Steel to ASTM		Alloy Steel to ASTM				Stainless Steel to ASTM			
		A105	A350 LF2	A182 F5	A182 F11	A182 F22	A182 F9	A182 F304	A182 F316	A182 F304L	A182 F316L
1	BODY	A105	A350 LF2	A182 F5	A182 F11	A182 F22	A182 F9	A182 F304	A182 F316	A182 F304L	A182 F316L
2	SEAT RING	As per Trim Material Combination									
3	WEDGE	As per Trim Material Combination									
4	GASKET	Stainless steel + Graphoil									
5	COVER	A105	A350 LF2	A182 F5	A182 F11	A182 F22	A182 F9	A182 F304	A182 F316	A182 F304L	A182 F316L
6	STUDS	A193 B7	A320 L7	A193 B7	A193 B16	A193 B16	A193 B16	A193 B8	A193 B8	A193 B8	A193 B8
7	NUTS	A194 2H	A194 Gr.4	A194 2H	A194 Gr.4	A194 Gr.4	A194 Gr.8	A194 Gr.8	A194 Gr.8	A194 Gr.8	A194 Gr.8

Body Material Combination with ASTM F304H, F316H, F321, F347 also provided on request



TRIM MATERIAL COMBINATION (ON REQUEST)

Trim No.	Seat Ring Face	Wedge Seat Face	Stem	Backseat Bush	Lantern Ring
1	F6a/13% Cr.	F6a/13% Cr.	F6a/AISI 410	F6a/AISI 410	F6a/AISI 410
2	F304	F304	F304/AISI 304	F304/AISI 304	F304/AISI 304
5	STELLITE	STELLITE	F6a/AISI 410	F6a/AISI 410	F6a/AISI 410
8	STELLITE	F6a/13% Cr.	F6a/AISI 410	F6a/AISI 410	F6a/AISI 410
9	MONEL	MONEL	MONEL	MONEL	MONEL
10	F316	F316	F316/AISI 316	F316/AISI 316	F316/AISI 316
12	316+STELLITE	316	F316/AISI 316	F316/AISI 316	F316/AISI 316
13	ALLOY 20	ALLOY 20	ALLOY 20	ALLOY 20	ALLOY 20

NOTE: Other Trim Combination can be provided as Trim Material Combination on request

• All Dimensions in mm

DIMENSIONAL DATA CLASS - 1500 (Full Bore)

DN	NPS	øb	L1(BWE)	L2(SWE)	H	ø SWE		D	Approx. Wt. (Kgs)
						BS 3799	ASME B16.11		
15	1/2	12	100	100	78	+0.3 21.8 -0.0	22.2 21.8	11	1.450
20	3/4	16	124	124	90	+0.3 27.4 -0.0	27.6 27.2	14	2.200
25	1	19	145	104	97	+0.3 34.1 -0.0	34.3 33.9	14	3.915
32	1 1/4	31	170	170	120	+0.3 42.9 -0.0	43.1 42.7	14	5.400
40	1 1/2	31	170	170	120	+0.3 49 -0.0	49.2 48.8	14	7

Note : The above data is subject to change without notice due to our continuing product improvement program. (WEIGHT GIVEN IN KGS)

TEST PRESSURES

CLASS	SHELL TEST (HYDROSTATIC)		SEAT TEST			
			HYDROSTATIC		PNEUMATIC	
1500	384 Bar	5568 Psi g	282 Bar	4075 Psi g	N.A.	N.A.

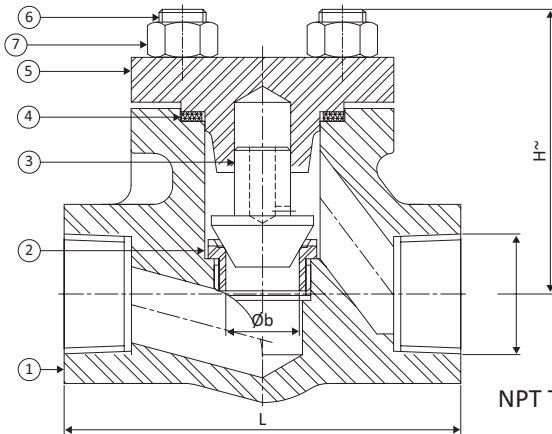
Valves can be supplied in other MOC's on request
SS (ASTM A 182 Gr.F304H/ F321) , DSS (ASTM A 182 Gr.F50 /F51/ F53/F55)



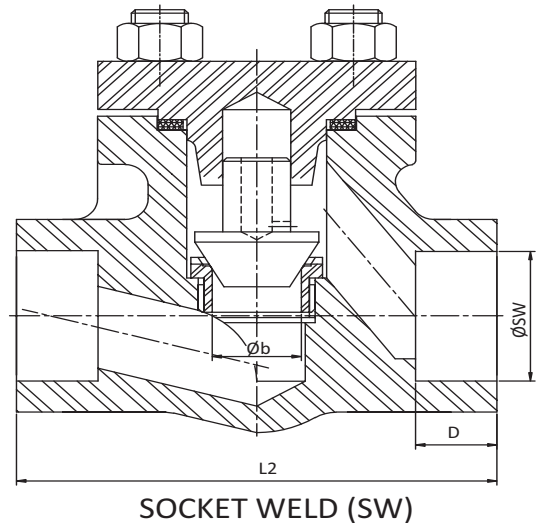
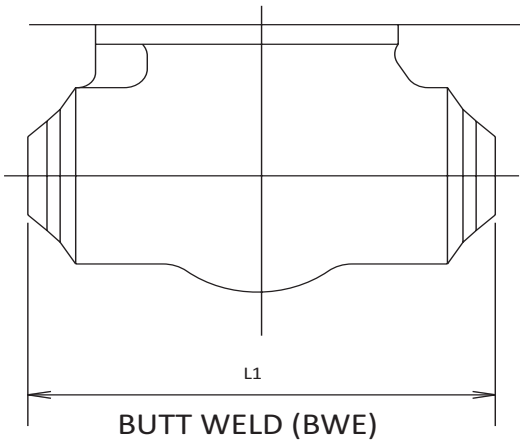
FORGED STEEL CHECK VALVE SCREWED END, SOCKET & BUTT WELD END - ASA 2500 CLASS

SPECIFICATIONS

Design Standard : API 602 / BSEN ISO 15761
Type : Lift / Piston Check Valve Bolted / Weld Cover



NPT THREADS As per ASME B1.20.1



STANDARD MATERIAL COMBINATION

P.No.	Description	Carbon Steel to ASTM		Alloy Steel to ASTM				Stainless Steel to ASTM			
		A105	A350 LF2	A182 F5	A182 F11	A182 F22	A182 F9	A182 F304	A182 F316	A182 F304L	A182 F316L
1	BODY	A105	A350 LF2	A182 F5	A182 F11	A182 F22	A182 F9	A182 F304	A182 F316	A182 F304L	A182 F316L
2	SEAT RING	As per Trim Material Combination									
3	WEDGE	As per Trim Material Combination									
4	GASKET	Stainless steel + Graphoil									
5	COVER	A105	A350 LF2	A182 F5	A182 F11	A182 F22	A182 F9	A182 F304	A182 F316	A182 F304L	A182 F316L
6	STUDS	A193 B7	A320 L7	A193 B7	A193 B16	A193 B16	A193 B16	A193 B8	A193 B8	A193 B8	A193 B8
7	NUTS	A194 2H	A194 Gr.4	A194 2H	A194 Gr.4	A194 Gr.4	A194 Gr.8	A194 Gr.8	A194 Gr.8	A194 Gr.8	A194 Gr.8

Body Material Combination with ASTM F304H, F316H, F321, F347 also provided on request



TRIM MATERIAL COMBINATION (ON REQUEST)

Trim No.	Seat Ring Face	Wedge Seat Face	Stem	Backseat Bush	Lantern Ring
1	F6a/13% Cr.	F6a/13% Cr.	F6a/AISI 410	F6a/AISI 410	F6a/AISI 410
2	F304	F304	F304/AISI 304	F304/AISI 304	F304/AISI 304
5	STELLITE	STELLITE	F6a/AISI 410	F6a/AISI 410	F6a/AISI 410
8	STELLITE	F6a/13% Cr.	F6a/AISI 410	F6a/AISI 410	F6a/AISI 410
9	MONEL	MONEL	MONEL	MONEL	MONEL
10	F316	F316	F316/AISI 316	F316/AISI 316	F316/AISI 316
12	316+STELLITE	316	F316/AISI 316	F316/AISI 316	F316/AISI 316
13	ALLOY 20	ALLOY 20	ALLOY 20	ALLOY 20	ALLOY 20

Note : Other Trim Combination can be provided as Trim Material Combination on request

• All Dimensions in mm

DIMENSIONAL DATA CLASS -2500

DN	NPS	øb	L1(BWE)	L2(SWE)	H	ø SWE		D	Approx. Wt. (Kgs)
						BS 3799	ASME B16.11		
15	1/2	11	130	130	75	+0.3 21.8 -0.0	22.2 21.8	11	10.3
20	3/4	14	130	130	75	+0.3 27.4 -0.0	27.6 27.2	14	11.8
25	1	19	130	130	75	+0.3 34.1 -0.0	34.3 33.9	14	12.7

Note : The above data is subject to change without notice due to our continuing product improvement program. (WEIGHT GIVEN IN KGS)

TEST PRESSURES

CLASS	SHELL TEST (HYDROSTATIC)		SEAT TEST			
			HYDROSTATIC		PNEUMATIC	
2500	639 Bar	9272 Psi g	469 Bar	6785 Psi g	N.A.	N.A.

