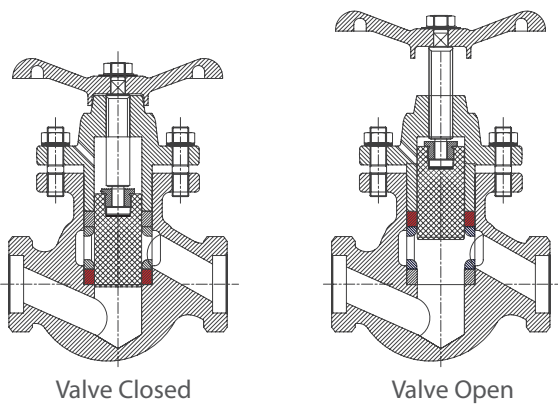


PISTON VALVES

FlowBiz brand Piston Valves offers glandless Piston Valves for assured long-term performance in process lines, steam & condensate. The ingenious valve is used for both isolation and throttling applications. FlowBiz offers Piston Valves with flanged, socket-weld and screwed ends connections.

FlowBiz Piston Valve's sealing affects the piston's linear motion between lower and upper valve rings. The valve closes when the piston engages with the lower ring. The valve opens when the piston aligns with the upper ring. While Piston, in conjunction with the upper ring, prevents leakage to the atmosphere.

Sizes : ½" to 8"
Class 150, 300 and 800



Features

- Large effective sealing area - Reliable shutoff(ANSI Leakage Class VI)
- Glandless design - No leakage to atmosphere
- Reinforced sealing rings and Belleville washers - Compensates for thermal expansions, Reliability
- Sealing not affected by presence of dirt or any other impurities in the media
- Online Serviceable - Sealing rings can be replaced without removing the valve from line
- Long service life
- Lower cost of ownership

Compliance Standards

- Valve Design: ASME B16.34, EN12516-2
- Wall Thickness: ANSI B16.34
- Face-to-Face: ASME B16.10, ASME B16.11
- Flange Dimensions: ANSI B16.5
- Pressure Testing: API 598

Option

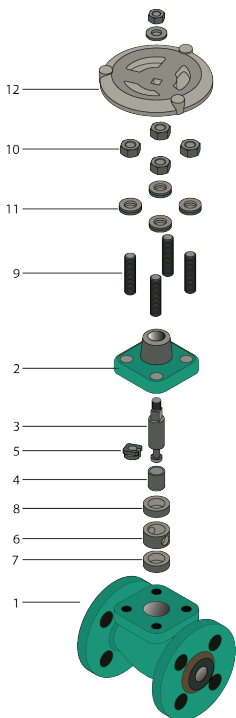
Balanced Piston Valves - To address high torque requirement due high inlet pressure, in sizes above DN65



RANGE

Materials/ Class (End Connections)	Sizes (DN/ NPS)									
	15	20	25	40	50	65	80	100	150	200
	½	¾	1	1½	2	2½	3	4	6	8
Cast Steel/ Class 150 (Flanged End)	•	•	•	•	•	•	•	•	•	•
Cast Steel/ Class 300 (Flanged End)	•	•	•	•	•	•	•	•		
Cast Steel/ Class 300 (Screwed/ Socket-weld)	•	•	•							
Forged Steel/ Class 800 (Screwed/ Socket-weld)	•	•	•	•						

Forged #800: DN15, 20, 25 – Angle pattern; DN25, 40 – Straight pattern. Weld-on flanged connections available.
Socket weld ends – as per ASME B16.11 Integral flanged ends - as per ASME B16.5 (#150, #300)



Materials of Construction

No.	Part	Cast Steel - #150 & #300	Forged Steel - #800
1	Body	A216 Gr. WCB	A105
2	Bonnet	A216 Gr. WCB	A105
3	Spindle	AISI 410	
4	Piston	AISI 304	
5	Split-Nut	Brass	
6	Lantern Bush	AISI 304/ A743 CA15	
7	Lower Valve Ring	Grafoil® with SS Reinforced	
8	Upper Valve Ring	Grafoil® with SS Reinforced	
9	Stud	A193 Gr. B7	
10	Nut	A194 Gr. 2H	
11	Belleville Washers	50 Cr V4	
12	Hand Wheel	Cast Iron	

Industries

- Power Plants
- Refinery & Petrochemical Industry
- Chemical & Pharmaceutical Industry
- Fertilizer Industry
- Solvent Extraction Industry
- Paper & Pulp Industry
- Edible Oil Industry
- Dairy Industry
- Distilleries
- Sugar Plants

Applications

- Steam Header
- Steam Manifolds
- Condensate Manifolds
- Thermic Fluid Lines
- Pressure Reducing Stations
- Desuperheating Stations
- Steam Trap Isolation Valves
- Process Steam & Utilities
- Chemicals
- Fatty Acids

